



Government of India  
Ministry of Earth Sciences



India Meteorological Department

## PRESS RELEASE - 4

Time of issue: 1245 hours IST

Dated: 22-05-2021

**Sub: A low pressure area formed over eastcentral Bay of Bengal and adjoining north Andaman Sea, today the 22<sup>nd</sup> May and its intensification into a Cyclonic Storm by 24<sup>th</sup> May.**

A Low pressure area has formed over **eastcentral Bay of Bengal today the 22<sup>nd</sup> May 2021 morning (0830 hrs IST)**. It is very likely to concentrate into a Depression over eastcentral Bay of Bengal by tomorrow, the 23<sup>rd</sup> May morning. It is very likely move north-northwestwards, intensify into a **Cyclonic Storm** by 24<sup>th</sup> May and further into a Very Severe Cyclonic Storm during the subsequent 24 hours. It would continue to move north-northwestwards, intensify further and reach North Bay of Bengal near West Bengal and adjoining north Odisha & Bangladesh coasts around 26<sup>th</sup> May morning.

It is very likely to cross West Bengal and adjoining north Odisha & Bangladesh coasts around evening of 26<sup>th</sup> May.

### Warnings:

#### (i) Rainfall:

- **Andaman & Nicobar Islands:** Light to moderate rainfall at most places with heavy to very heavy falls at isolated places on 22<sup>nd</sup> & 23<sup>rd</sup> May.
- **Gangetic West Bengal:** Light to moderate rainfall at most places with heavy falls at isolated places very likely to commence over coastal Districts from 25<sup>th</sup> May with significant increase in spatial extension and intensity subsequently. Light to moderate rainfall at most places with heavy to very heavy falls a few places & extremely heavy falls at isolated places very likely on 26<sup>th</sup> May.
- **Sub- Himalayan west Bengal & Sikkim-** Light to moderate rainfall at most places with heavy to very heavy falls at isolated places very likely on 26<sup>th</sup> May and heavy to very heavy rainfall at a few places and extremely heavy falls at isolated places on 27<sup>th</sup>.
- **Odisha:** Light to moderate rainfall at many places with heavy falls at isolated places very likely over north coastal Odisha on 25<sup>th</sup> and over north Odisha on 26<sup>th</sup> May.

#### (ii) Wind warning

- Squally wind speed reaching 50–60 kmph gusting to 70 kmph is likely to prevail over and around Andaman & Nicobar Islands, Andaman Sea & adjoining eastcentral and southeast Bay of Bengal on 22<sup>nd</sup> May. It is very likely to increase becoming 55–65 kmph gusting to 75 kmph over **eastcentral Bay of Bengal and adjoining north Andaman Sea** from 23<sup>rd</sup> Morning. It is very likely to increase further becoming Gale wind speed reaching 65 to 75 gusting to 85 over major parts of central Bay of Bengal from 24<sup>th</sup> morning and would increase gradually till 25<sup>th</sup> May.
- Squally wind speed reaching 40-50 kmph gusting 60 kmph is very likely to prevail over North Bay of Bengal and along and off Odisha – West Bengal – Bangladesh coasts from 24<sup>th</sup> evening. It would increase gradually becoming 50-60 kmph gusting to 70 kmph from 25<sup>th</sup> evening. It would further increase becoming gale wind speed 60-70 kmph gusting to 80 kmph from 26<sup>th</sup>

Contact: Cyclone Warning Division, Office of the Director General of Meteorology,  
India Meteorological Department, Ministry of Earth Sciences.

Phone: (91) 11-24652484, FAX: (91) 11-24643128, 24623220, E-mail: [cwdhq2008@gmail.com](mailto:cwdhq2008@gmail.com), Website: [rsmcnewdelhi.imd.gov.in](http://rsmcnewdelhi.imd.gov.in)

Spatial rainfall distribution: Isolated: <25%, A few: 26-50%, Many: 51-75%, Most: 76-100%

Rainfall amount (mm): Heavy rain: 64.5 – 115.5, Very heavy rain: 115.6 – 204.4, Extremely heavy rain: 204.5 or more.

early hours along and off West Bengal & adjoining north Odisha and Bangladesh coasts. It would gradually increase further becoming 90-100 gusting to 110 kmph from 26<sup>th</sup> forenoon and increase thereafter till 26<sup>th</sup> evening.

**(iii) Sea condition**

- Sea conditions will be rough to very rough over Andaman Sea & adjoining eastcentral Bay of Bengal on 22<sup>nd</sup> & 23<sup>rd</sup> May, High to very High over major parts of central Bay of Bengal, north Bay of Bengal and along & off Odisha – West Bengal - Bangladesh coasts during 24<sup>th</sup> – 26<sup>th</sup> May.

**(iv) Tidal wave**

Tidal waves of 1- 2 meter height very likely to inundate low lying areas of Andaman & Nicobar islands on 22<sup>nd</sup> & 23<sup>rd</sup> May.

**(iv) Fishermen Warning**

- The fishermen are advised not to venture into southeast & east central Bay of Bengal, Andaman Sea and along and off Andaman & Nicobar Islands during 22<sup>nd</sup> – 24<sup>th</sup> May, into central Bay of Bengal from 23<sup>rd</sup> – 25<sup>th</sup> May and into north Bay of Bengal and along & off West Bengal – Odisha – Bangladesh coasts from 24<sup>th</sup> – 26<sup>th</sup> May.
- Those who are out in the Deep Sea of eastcentral & adjoining northeast Bay of Bengal are advised to return to the coast.

The intensification & likely movement of the system is under continuous surveillance and the concerned state governments are being informed regularly.

Kindly visit [www.rsmcnewdelhi.imd.gov.in](http://www.rsmcnewdelhi.imd.gov.in) and [www.mausam.imd.gov.in](http://www.mausam.imd.gov.in) for regular updates.

---

Contact: Cyclone Warning Division, Office of the Director General of Meteorology,  
India Meteorological Department, Ministry of Earth Sciences.

Phone: (91) 11-24652484, FAX: (91) 11-24643128, 24623220, E-mail:cwdhq2008@gmail.com, Website: [rsmcnewdelhi.imd.gov.in](http://rsmcnewdelhi.imd.gov.in)

Spatial rainfall distribution: Isolated: <25%, A few: 26-50%, Many: 51-75%, Most: 76-100%

Rainfall amount (mm): Heavy rain: 64.5 – 115.5, Very heavy rain: 115.6 – 204.4, Extremely heavy rain: 204.5 or more.

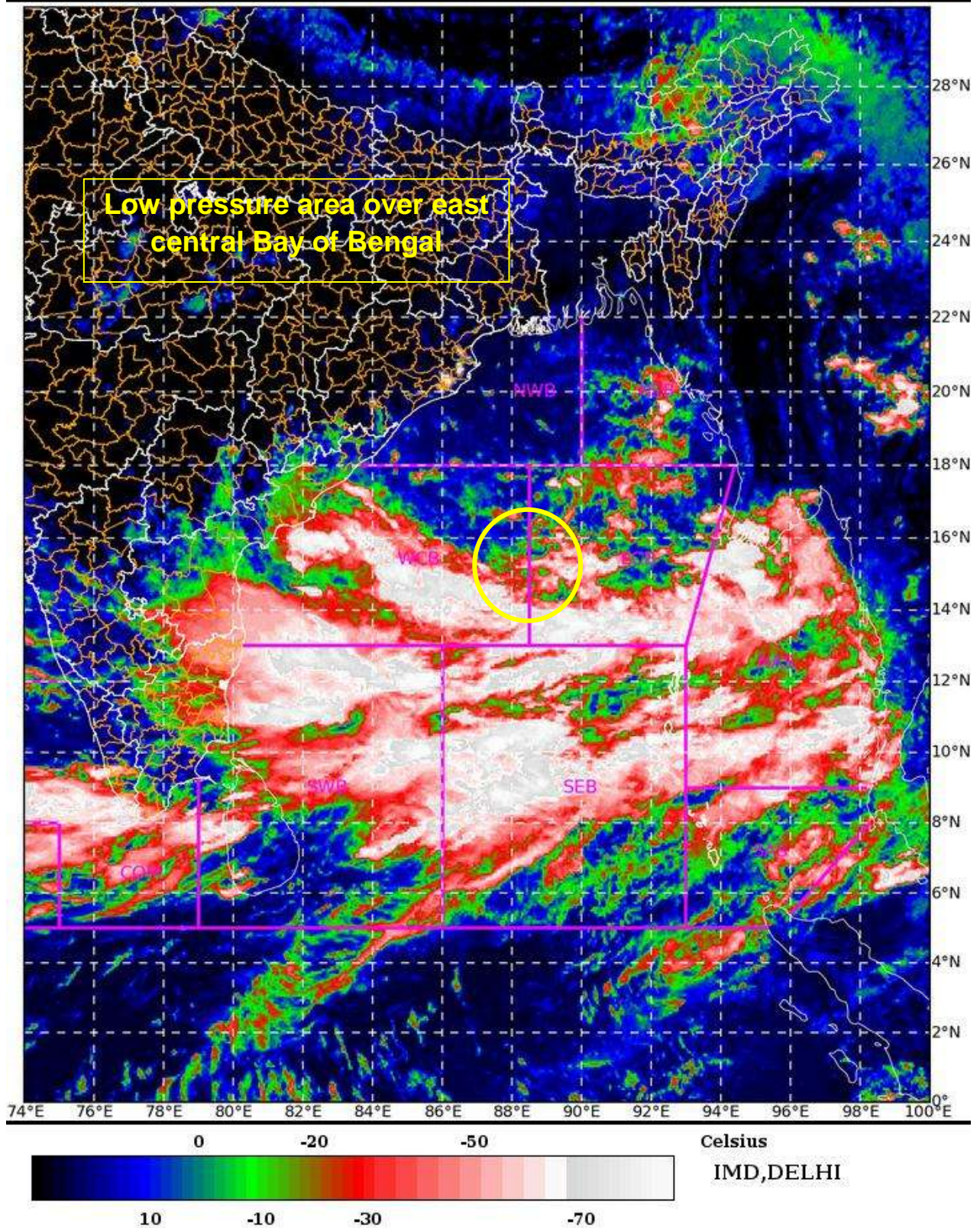
SAT : INSAT-3D IMG

22-05-2021/(0600 to 0627) GMT

IMG\_TIR1\_TEMP 10.8 um

22-05-2021/(1130 to 1157) IST

L1C Mercator



Contact: Cyclone Warning Division, Office of the Director General of Meteorology,  
India Meteorological Department, Ministry of Earth Sciences.

Phone: (91) 11-24652484, FAX: (91) 11-24643128, 24623220, E-mail: [cwdhq2008@gmail.com](mailto:cwdhq2008@gmail.com), Website: [rsmcnewdelhi.imd.gov.in](http://rsmcnewdelhi.imd.gov.in)

Spatial rainfall distribution: Isolated: <25%, A few: 26-50%, Many: 51-75%, Most: 76-100%

Rainfall amount (mm): Heavy rain: 64.5 – 115.5, Very heavy rain: 115.6 – 204.4, Extremely heavy rain: 204.5 or more.